

Stays on

Uniquely conforms



Mepilex[®] Border Flex

A unique combination of Flex Technology and Safetac[®]



Designed to conform and stay on

Innovative Flex Technology allows Mepilex® Border Flex to move in every direction, reducing skin stress, increasing comfort¹⁻³ and keeping it in place.

Smart exudate management

The 5-layer dressing absorbs, channels and traps exudate and allows you to track progress.* It also keeps exudate containing bacteria from the wound bed and minimizes re-entry, even under compression.⁴

Reduced pain and trauma

Our proven Safetac® technology means less pain and trauma to the skin⁵ during dressing changes and reduced risk of maceration compared to traditional (adhesive) dressings.^{6,7}

* In vitro studies

UP TO **94%**

Superior flexibility compared to other foam dressings^{8, 19, 20}

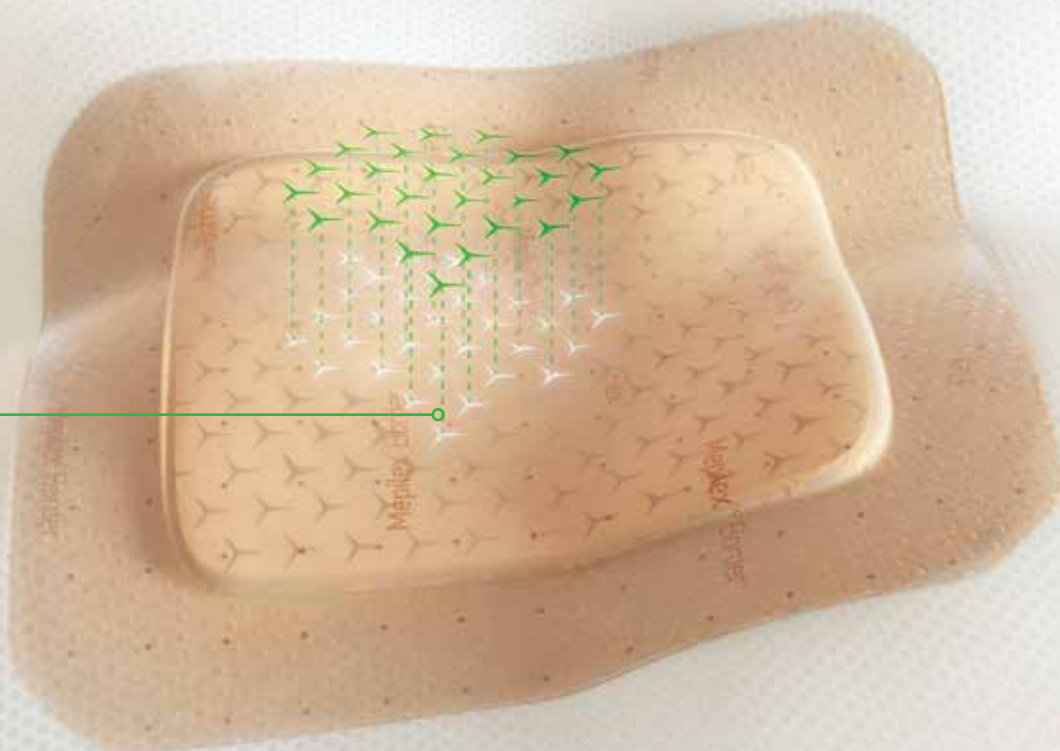
UP TO **125%**

Greater exudate handling capacity compared to other foam dressings^{9, 19, 21}

93%

Of patients preferred dressings with Safetac® over traditional (adhesive) dressings⁵

360°



**Wounds need to heal. Patients need care.
Nurses need time. Budgets are tight.
The challenge is finding a dressing
that stays on as long as it is needed.
Without compromise.**

**Mepilex Border Flex combines innovative
Flex Technology with our proven Safetac®
technology to create a dressing that stays
on and is still gentle.**

Designed to conform and stay on

Introducing proprietary
Flex Technology:

- ✓ 360° flexibility
- ✓ Unique conformability

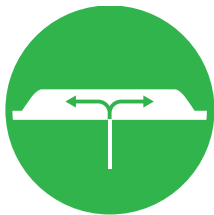


Four steps to smart exudate management-giving you the confidence to leave it on for longer.



1. Rapid absorption without swelling

The foam layer allows rapid absorption of both normal and viscous exudate.^{10,11} It is better at handling exudate than comparable dressings,⁹ allowing you to leave it on for longer.



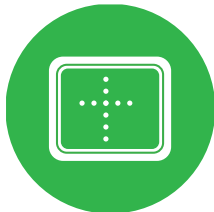
2. Exudate channelled to increase breathability

The layers of the dressing channel exudate away from the wound bed and spread it over a wide surface area to increase moisture vapor loss. Minimal swelling.¹² Maximum conformability.⁸ Low profile.



3. Bacteria trapped away from the wound

The superabsorbent fibers in the retention layer prevent exudate containing bacteria from re-entering the wound bed, even under compression.⁴



4. Exudate tracked without dressing removal

The Exudate Progress Monitor allows the spread of exudate to be objectively assessed and recorded, without disturbing the wound.¹³

ENABLING PROTOCOL CHANGE

78% Fewer Dressing Changes

In a recent quality improvement project conducted to measure dressing performance and utilization, Mepilex Border Flex was the clear winner over Optifoam Gentle Border. On average, Mepilex Border Flex stayed in place for the 3-day wear time as indicated in the protocol, while Optifoam stayed in place less than one day. This resulted in not only **78%** fewer dressing changes, but also 74% lower cost per patient and 21 hours less nursing time with Mepilex Border Flex.¹⁴

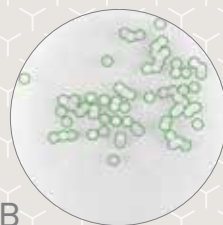


FIGHTING RECONTAMINATION

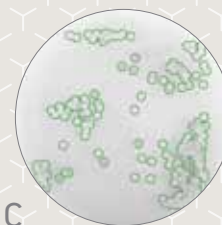
Bacterial trapping in action: testing shows that Mepilex Border Flex demonstrated a significantly higher bacterial trapping capacity than other foam dressings*¹⁵



A
Mepilex® Border Flex after 1 hour of contact, number of bacterial colonies: between 0 and the low single digits^{16,17}



B
Sorbact® Foam Gentle Border after 1 hour of contact, number of bacterial colonies: about 70 bacterial colonies¹⁶.



C
Cutimed® Siltec Sorbact® after 1 hour of contact, number of bacterial colonies: too numerous to count¹⁷.

*In vitro studies.

Cost-effective wound care

Wound care makes up a significant portion of healthcare budgets. Only 14% of the overall cost is due to wound care products – the majority is driven by the provision of care for patients.¹⁸ Unscheduled dressing changes require nurse time and resources. By reducing dressing changes, Mepilex® Border Flex may support undisturbed wound healing as well as a reduction in costs.¹⁴

Learn more about how Mepilex Border Flex can make a difference to your patients, team and budget at www.molnlycke.us/MBFlex

Ordering information (sterile packed)

Product Code	Size	Pcs/box	Pcs/case	HCPCS
595200	3" x 3" (7.5 x 7.5 cm)	5	50	A6212
595300	4" x 4" (10 x 10 cm)	5	50	A6212
595400	6" x 6" (15 x 15 cm)	5	50	A6213
595600	6" x 8" (15 x 20 cm)	5	50	A6213



References: **1.** Mölnlycke Health Care. Report no. PD-529747. Data on file. **2.** Mölnlycke Health Care. Report no. PD-534569. Data on file. **3.** Mölnlycke Health Care. Report no. PD-534571. Data on file. **4.** Mölnlycke Health Care Report no. PD-537072. Data on file. **5.** White, R. A multinational survey of the assessment of pain when removing dressings. Wounds UK 2008;4(1):14-22. **6.** Woo, K. & Bergström, C. An Open Randomised Cross-over Investigation Assessing Perceived Pain at Dressing Change Comparing A Soft Silicone Dressing, Mepilex® Border, with an Adhesive hydrocellular polyurethane dressing, Allevyn® Adhesive in Patients with chronic ulcer (Clinical Investigation Report (MXB408, Part A, Mölnlycke Health Care), 2007). **7.** Meaume, S et al. A Study to Compare a New Self-Adherent Soft Silicone Dressing with a Self-Adherent Polymer Dressing in Stage II Pressure Ulcers. Ostomy Wound Manag. 2003; 49(9): 44-51. **8.** Mölnlycke Health Care. Mepilex Border Flex Product Manual – Conformability PD-528870. Data on file. **9.** Mölnlycke Health Care. Report no. PD-527642. Data on file. **10.** Mölnlycke Health Care. Report no. PD-528871. Data on file. **11.** Mölnlycke Health Care. Report no. PD-535352. Data on file. **12.** Mölnlycke Health Care. Report no. 525458. Data on file. **13.** Mölnlycke Health Care. Mepilex Border Flex no. PD-528872. Data on file. **14.** Tyson, LP. Study First: Driving the Case for Improving Hospital Wound Care. Poster Presentation at SAWC 2019, San Antonio, TX. **15.** Karlsson et al. Bacterial trapping of a newly developed all-in-one soft silicone foam dressing. Poster. EWMA, Krakow 2018. **16.** Karlsson et al. A quantitative method for determination of bacterial trapping effect in wound dressings. Poster. EWMA, Krakow 2018. **17.** Mölnlycke Health Care. Report no. PD-551237. Data on file. **18.** Guest, J et al. The health economic burden that acute and chronic wounds impose on an average clinical commissioning group/health board in the UK. Journal of Wound Care vol 26, no 6 June 2017. **19.** Mölnlycke Health Care. Allevyn Life Testing. Lab Report No. 20171024-007 **20.** Mölnlycke Health Care. Optifoam Gentle Border. Lab Report No. 20190508-004. **21.** RISE Report, Fluid Handling Capacity 2019.